

ANSWER Software Update

Ken Noble

Noble-Soft Systems, Australia

ETSAP Annex VIII Paris Meeting

21-25 June 2004

Noble-Soft Systems Pty Ltd

Noble-Soft Systems is now the owner of ANSWER

- ◆ *ANSWER was originally developed and marketed from 1996 to 2003 by ETSAP Partner ABARE, Australia*
 - then ABARE staff member Ken Noble had primary responsibility
- ◆ *Ken Noble has retired from ABARE and Noble-Soft Systems has purchased ANSWER from ABARE*
 - ensuring continuing development and support for the software
- ◆ *Dr Ken Noble, Noble-Soft Systems Pty Ltd*
- ◆ *30 Beaumont Crescent, The Ridgeway, NSW, Australia*
- ◆ *Phone/Fax: +61 2 6297 1405*
- ◆ *Email: noblesoft@netspeed.com.au*

Noble-Soft Systems Pty Ltd

ANSWER Support & Development for IEA-ETP Model

◆ Special version of ANSWER to meet needs of IEA's very large multi-region MARKAL model

- Library region database, most regional data linked to data in Library region
- Main assumption is that "child" technology / commodity in local region has same name, description, units etc as "parent" technology / commodity in Library region
- Facilities for bulk copying and updating from Library
- Facilities for × , +, override of Library parameter numeric values via Operator Parameters
- Details available from Noble-Soft

Noble-Soft Systems Pty Ltd

New AnswerV5.exe, version 5.3.0

◆ Available mid-July 2004

- Many enhancements
- Including some enhancements developed for IEA-ETP model

◆ Enhancements in version 5.3.0 AnswerV5.exe

- System tables adjusted to handle recent enhancements in GAMS-MARKAL code
- New "Batch Run" facility
- New "Batch of Related Cases" facility
- RES graphics for Results
- "Import Model Data from Excel" enhanced (multiple Excel files)
- "Select All" recoded for speed and reliability

Noble-Soft Systems Pty Ltd

New AnswerV5.exe, version 5.3.0

◆ Enhancements in version 5.3.0 AnswerV5.exe (cont)

- ETSAP-preferred naming of model variants
- Run Model no longer puts out domains to .DD and .DDS files
- "Repair and Compact" automatically invoked every 7 days
- New "Tools, Options..." facility to allow user control of "Repair and Compact"
- TS and TID Filter facility now allows temporary filters
- New "Sync. Scen." button to synchronize Selected Scenarios with Selected Cases
- "Export Scenario" with fewer periods in .IMP file than database contains
- "Import Scenario" when more periods in .IMP file than database contains

Noble-Soft Systems Pty Ltd

New AnswerV5.exe, version 5.3.0

◆ Enhancements in version 5.3.0 AnswerV5.exe (cont)

- "Import Units Settings" handles Money units better
- "Edit Units" handles Money units better
- On change of tabs, focus placed on selected Item(s) in Items listview

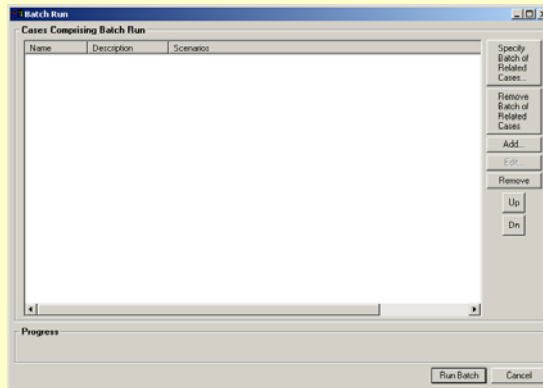
◆ Updating to version 5.3.0 AnswerV5.exe

- Mid-July, Noble-Soft will advise how to download from web

Noble-Soft Systems Pty Ltd

New “Batch of Related Cases” facility - 1

- ◆ Click on “Batch Run...” button on home screen
- ◆ Click on “Specify Batch of Related Cases” button



Noble-Soft Systems Pty Ltd

New “Batch of Related Cases” facility - 2

Specify Batch of Related Cases

Stem Name, Desc. for Batch: DOLF | Demonstration for Dolf of 3x3x2x2 = 36 runs

Case that forms basis for Batch
 Name, Desc: BASE-ETP | ETP BASE model data + non-BASE scenario
 Model Variant: MARKAL + MultiRegion
 Collapse Diff. DMD Costing: No (DIFFDMS=0) Lumpy Investment End year: 2020

Scenarios comprising this case:

Name	Description	Modified
BASE	ETP BASE model data	2004/03/22 11:21
NBASCEN1	non-BASE scenario 1	2004/04/05 16:29

Specify Alternate Scenarios to append to Case above (via right-mouse click)

	Alt Scenario 1	Alt Scenario 2	Alt Scenario 3	Alt Scenario 4	Alt Scenario 5	Alt Scenario 6	Alt Scenario 7	Alt Scenario 8
Append 1	GHPEN1	GHPEN2	GHPEN3					
Append 2	LRNRATE1	LRNRATE2	LRNRATE3					
Append 3	LINVSIZ1	LINVSIZ2						
Append 4	SECDRAT1	SECDRAT2						
Append 5								
Append 6								
Append 7								

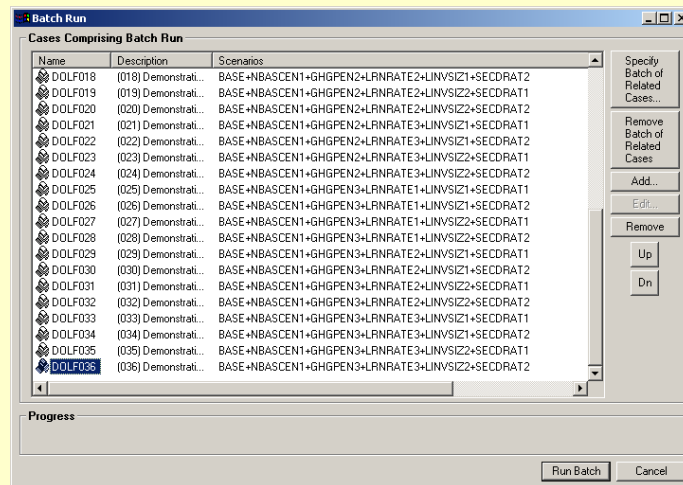
No. of Cases in Batch = 3 x 3 x 2 x 2 = 36

Add Batch of Cases to list for Run Batch

OK Cancel

Noble-Soft Systems Pty Ltd

New “Batch of Related Cases” facility - 3



Noble-Soft Systems Pty Ltd

Pending ANSWER Enhancements

- ◆ **Allow handling of cross-region data parameters**
 - i.e. parameters that do not have a region index
- ◆ **System tables adjusted to incorporate SAGE and SAGE MKTSHR**
- ◆ **New “Delete Case, Remember Case Definition” facility**
- ◆ **New “Export Model Data to Excel” facility**
 - to allow selective export in same format as “Import Model Data from Excel”
- ◆ **Full multi-select for Cases listview**
 - to allow multi-delete and multi-import of selected Cases
- ◆ **Other suggestions from ETSAP members will be considered**

Noble-Soft Systems Pty Ltd