

KanORS  
ETSAP, Venice  
June 16, 2009

## VEDA Update

### Main Areas

- [www.KanORS.com/VEDASupport/](http://www.KanORS.com/VEDASupport/)
- [www.KanORS.com/Results/TIAM\\_](http://www.KanORS.com/Results/TIAM_)
- VEDA-TIMES models in DBO format
- VEDA\_BE
- VEDA\_FE

# VEDA Support

The screenshot shows a website header with the title "VEDA Support" in blue. Below the header is a navigation menu with four items: "Installation", "VEDA-FE", "VEDA-BE", and "VEDA Utilities", all in blue text with underlines. To the right of the menu is a red banner with the text "\*\*\* This site works c". Below the banner is a paragraph of text: "We are in the process frequent and substant be deeply appreciated priority order for popu".

6/28/2009

ETSAP (Venice)

3

## VEDA Support - FE

- Overview
- Template Basics – Files (first half)
- Template Basics – Tables (more tables to come)
- Making a new model
  - Only a flash demo which is a rather large file; file size will be reduced
- TIMES variants and switches
  - Discrete Investments example
- User constraints (very cryptic at this point...)
- Demand module
  - Demand manager
  - View projections/Input
- Advanced Features (partial list but complete information for the features mentioned).

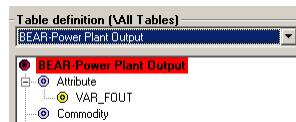
6/28/2009

ETSAP (Venice)

4

## VEDA\_BE

- Excel update
  - Make a template with exported tables
  - Create updated workbooks, by region/scenario
    - Template\_<ScenarioName>\_<Region>
    - Example: PET\_Ref25-1606\_GR
  - Tables used are protected



- Comment ->

6/28/2009

ETSAP (Venice)

Table Name: BEAR-Power Plant Output  
 Active Unit: BkWh  
 Global Filter Applied For: Scenario - BAU-AEO, CAP-TRXB

5

## VEDA\_BE (cont'd)

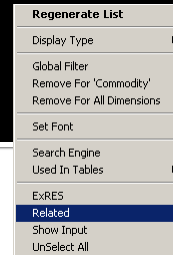
- VBA for cross-scenario analysis
- Sorting
  - Table Master Ctrl+M
  - Delete Cube File(s)
  - Sort Tables
    - Ascending
    - Descending
    - By Date
  - immediate
  - intage
  - scenario
- SnT: all sets and table definitions moved to a separate database
  - Ready for release
- ExRES supported for sets as well

6/28/2009

ETSAP (Venice)

6

## VEDA\_BE (Future)



- Related
  - Will construct the ExRES for producing/consuming processes for commodities, and consumed/produced commodities for processes
- Show Input
  - Will launch VEDA\_FE and show all data related to the selected process/commodity
- Smart import

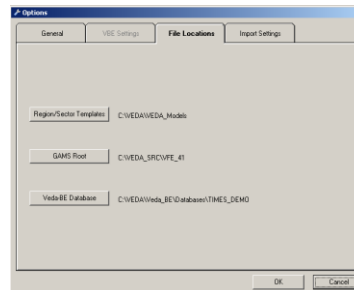
6/28/2009

ETSAP (Venice)

7

## VEDA\_FE

- VEDA\_BE sets available in VEDA\_FE environment
  - Location of VEDA\_BE database declared in VEDA\_FE



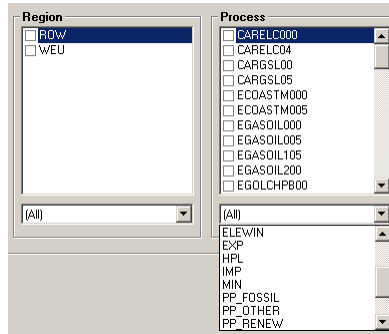
6/28/2009

ETSAP (Venice)

8

## VEDA\_FE (cont'd)

- Available in browse



- Can be used in PSET\_Set col of scenario files

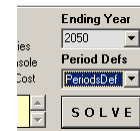
6/28/2009

ETSAP (Venice)

9

## VEDA\_FE (cont'd)

- Period definition selected at run time
- Building a model from scratch
- Supported attributes displayed
  - Clean-up of some attributes like Share+



Attribute	TimePeriods	Process	Commodity	TimeSlice	Lim typ	Currency	Stage	S/W	Other Index	Alias
ACT_END	Yes			ANNUAL	UP					BOUND(B)/BNDACT/END-98
ACT_COST	Yes					EUR				VAROMACTCOST
ACT_EFF	Yes			ANNUAL					CostEff	
CAP_END	Yes				UP					BOUND(B)/BNDCAP
CCAPS	NO									
CCAPM	NO									
CEFF	Yes	Cap In		ANNUAL						CEFF-I
CEFF	Yes	Cap Out		ANNUAL						CEFF-EFFICIENCY
CEFF	Yes	Cap Out		ANNUAL						CEFF-O
CLUSTER	NO								TimeShare	

6/28/2009

ETSAP (Venice)

10

## VEDA\_FE (cont'd)

- External Regions
- FIN commodity type
- ~TFM\_UPD-T
- Direct edit: warning if formula in the destination cell
- Significant EFF improvement in DD writing

6/28/2009

ETSAP (Venice)

11

## VEDA\_FE (Future)

- Closer link with VEDA\_BE
  - Show results for selected process/commodity
  - Expanding the batch running facility

6/28/2009

ETSAP (Venice)

12