



TIAM-UCL – Achieving 2°C by 2100

ETSAP Workshop, 11th December 2012, Lisbon

Olivier Dessens, Gabriel Ananadarajah, **Hannah Daly**
 UCL Energy Institute, University College London, United Kingdom

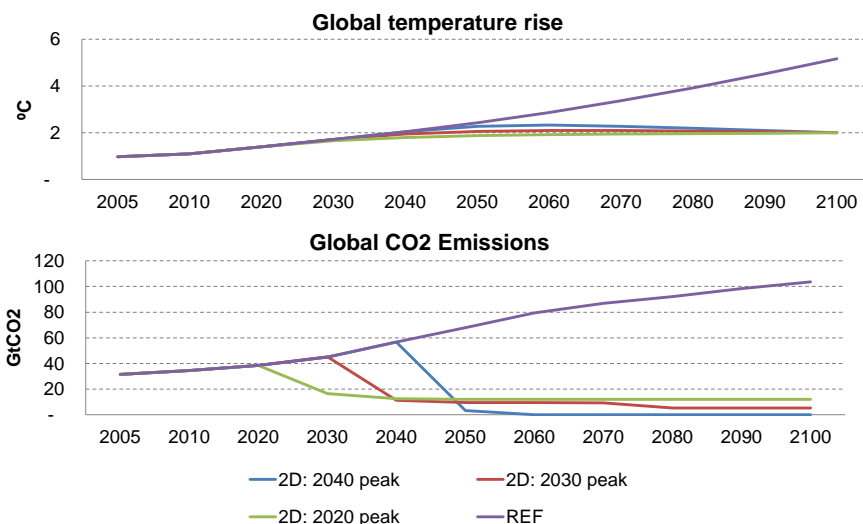


UCL-TIAM

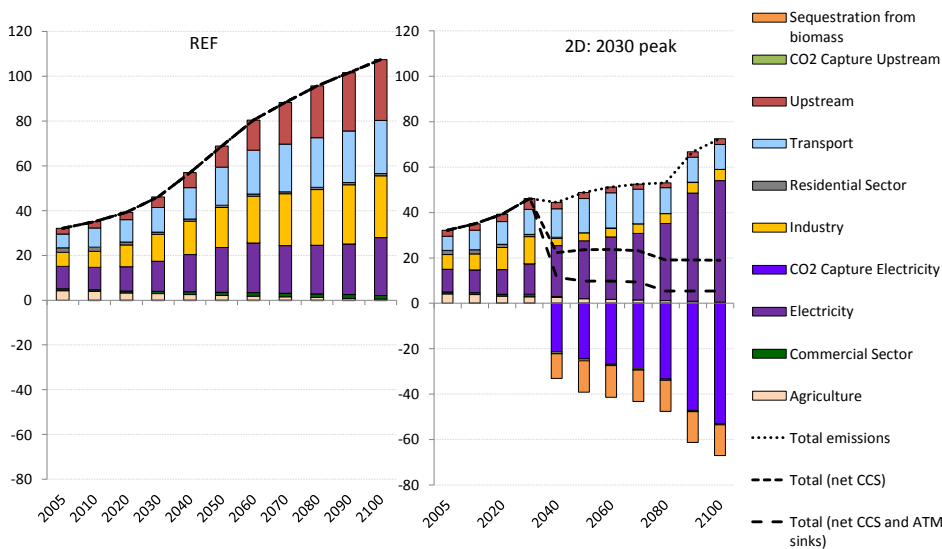
- UK explicitly modelled
- Recalibration to IEA2005 data
- Biomass trade
- CCS retrofit
- Revised
 - driver growth rate and new drivers
 - resource module and refineries
 - land-use emissions
 - Non-CO2 gases
 - Process emissions
 - Transport technologies data
- Nuclear:
 - Nuclear RES modelled
 - Constraint to uranium
- CCS retrofit
- Recalibrated climate module
- Revised data for transport technologies
- Improved representation of hydrogen infrastructure



Reference and 2°C target scenarios

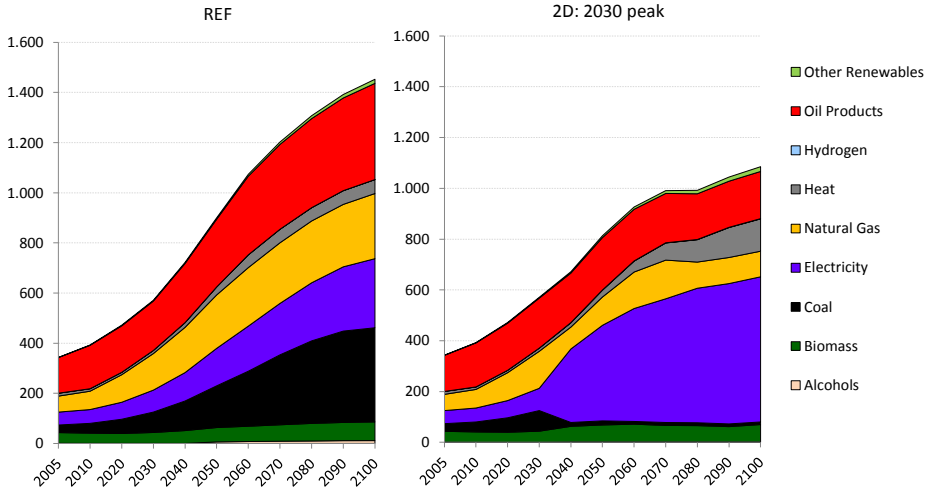


Emissions by Sector (GtCO2)

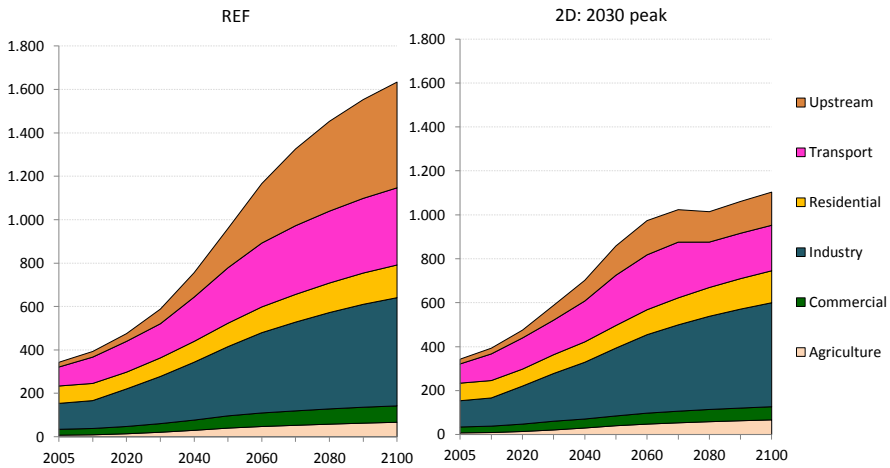




Final Energy Consumption by Fuel (EJ)

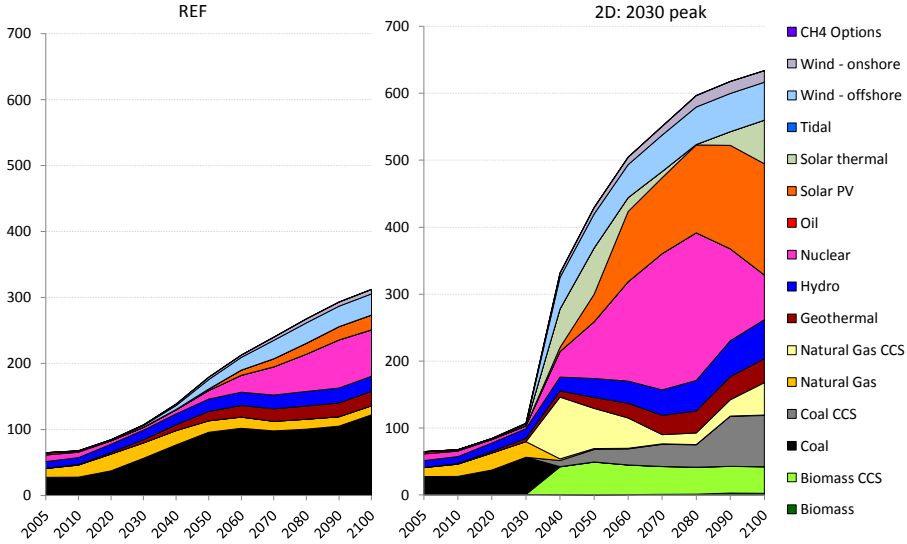


Final Energy Consumption by Sector (EJ)

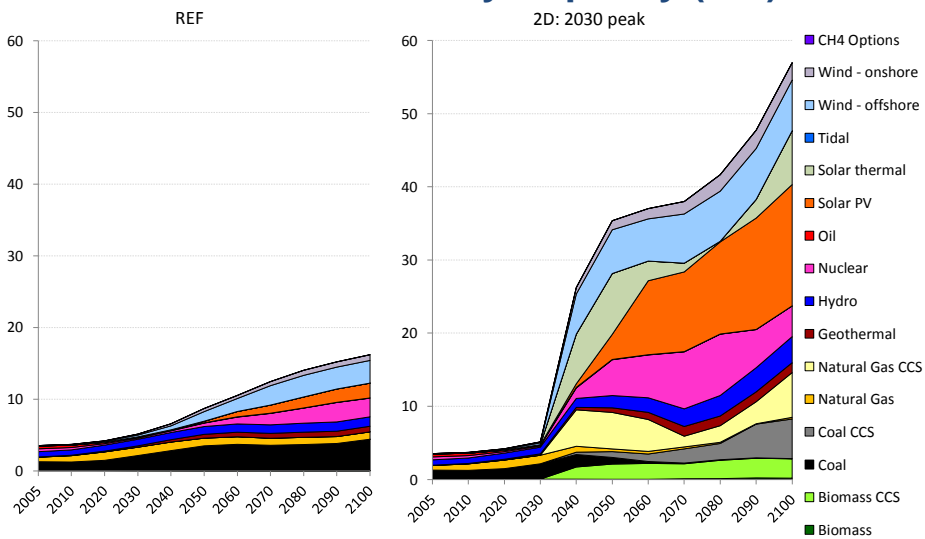




Electricity Generation (EJ)

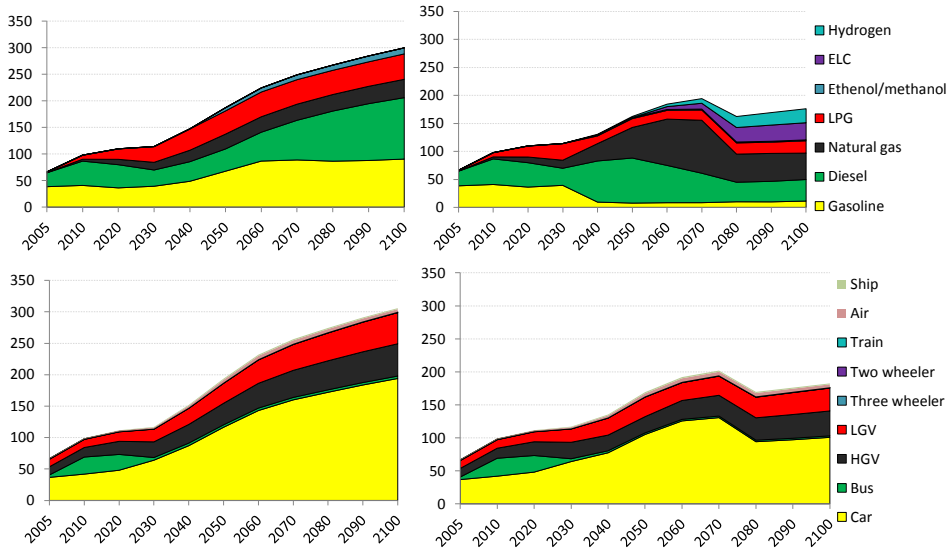


Total Installed Electricity Capacity (TW)

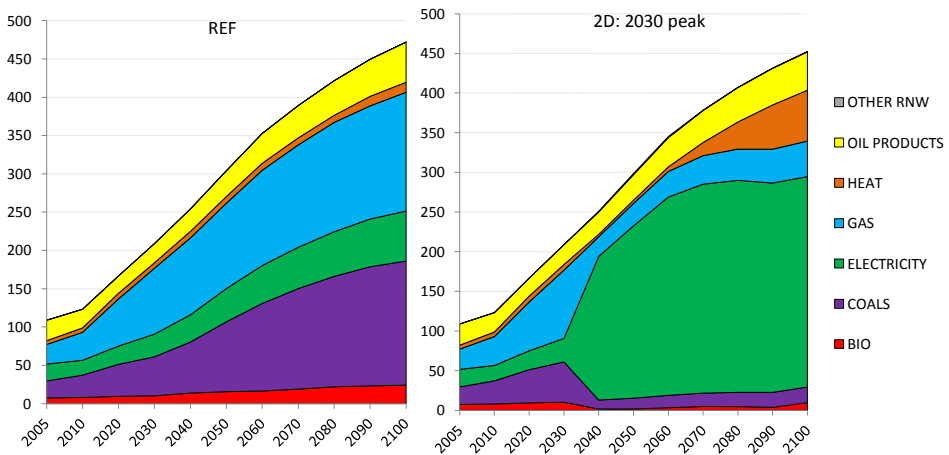




Transport fuel consumption by fuel and mode (PJ)



Industrial energy demand by fuel (PJ)



Future Contributions to ETSAP-TIAM

- International aviation & shipping
- Nuclear RES
 - Uranium resources and trade