

Mitigation targets & carbon value: insights from TIMES-FR

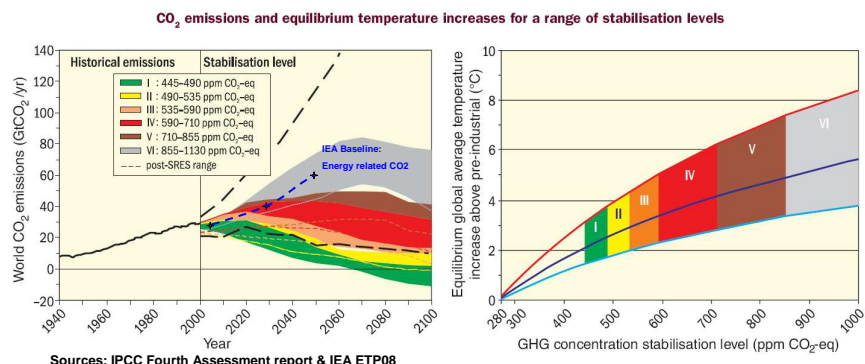
E. Assoumou
N. Maïzi
G. Guerassimoff
M. Bordier

« Carbon and prospective », Sophia Antipolis 2008

Chaire Modélisation prospective
au service du développement durable

ParisTech
INSTITUT DES SCIENCES ET TECHNOLOGIES
PARIS INSTITUTE OF TECHNOLOGY

From worldwide awareness to stronger targets: mitigation levels and costs?



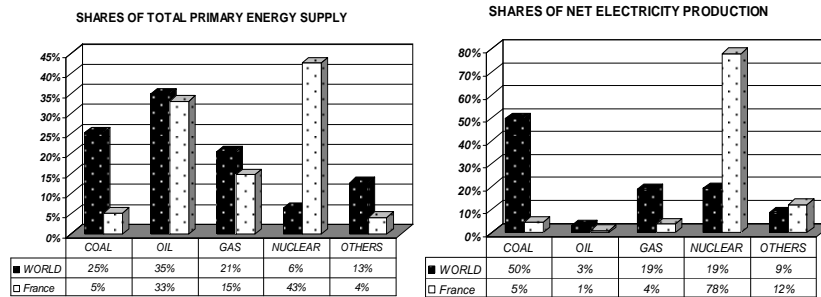
- Usefulness of the carbon value as synthetic cost indicator

Chaire Modélisation prospective
au service du développement durable

ParisTech
INSTITUT DES SCIENCES ET TECHNOLOGIES
PARIS INSTITUTE OF TECHNOLOGY

Country specificities matter

- Sovereignty and differences in opportunities



- Constraints on technologies and trades expansion
- All targets ... end-up as country level ones

Chaire Modélisation prospective
au service du développement durable

ParisTech
INSTITUT DES SCIENCES ET TECHNOLOGIES
PARIS INSTITUTE OF TECHNOLOGY

French GHG emission targets

- 2008-2010-Kyoto: In the good direction for stabilization

GHG level vs Kyoto	1996	1998	2000	2002	2004	2005	2006
UE (15 pays)	107%	106%	105%	105%	107%	107%	106%
France	101%	102%	99%	97%	98%	98%	96%

- 2020-EU Energy and climate package
 - EU mitigation target: -20% CO₂eq vs 1990
 - 2008 burden sharing FR: -14% CO₂eq vs. 2005
- 2050-FR
 - Factor 4: Energy orientation law
 - Factor 2 to 2.5: F4 review by the Energy commission 2007

Chaire Modélisation prospective
au service du développement durable

ParisTech
INSTITUT DES SCIENCES ET TECHNOLOGIES
PARIS INSTITUTE OF TECHNOLOGY

Carbon value assessment with TIMES-FR

- A resource allocation model to investigate energy resources and technology choices for supply and demand in France
- Analysis of the abatement cost of carbon:
 - “Benchmark” scenarios: Baseline, Low demand, -50%
 - Taxes scenarios: predefined profiles
 - Sensitivity analysis
- Energy related CO2 only

Chaire Modélisation prospective
au service du développement durable

ParisTech
INSTITUT DES SCIENCES ET TECHNOLOGIES
PARIS INSTITUTE OF TECHNOLOGY

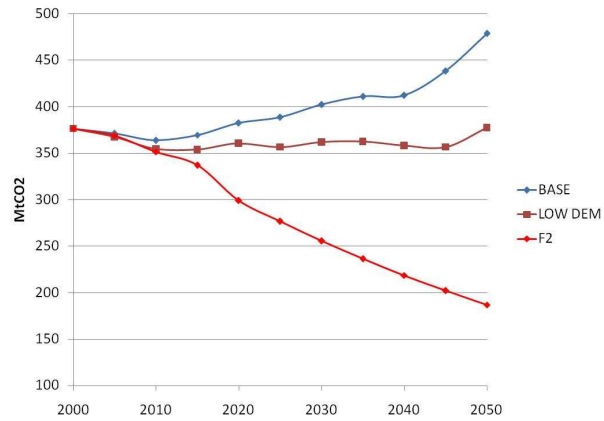
Scenarios for an exploration

- 3 “benchmarks”: Base, low demand, Factor2
- 7 tax profiles
 - Initial values 2010: 30€/tCO₂, 100€/tCO₂
 - Yearly growth rate: 0%, 3%, 5%, 8%
- What we want to understand:
 - Resulting abatement level
 - Time dependency of the carbon value: taxes or dual values

Chaire Modélisation prospective
au service du développement durable

ParisTech
INSTITUT DES SCIENCES ET TECHNOLOGIES
PARIS INSTITUTE OF TECHNOLOGY

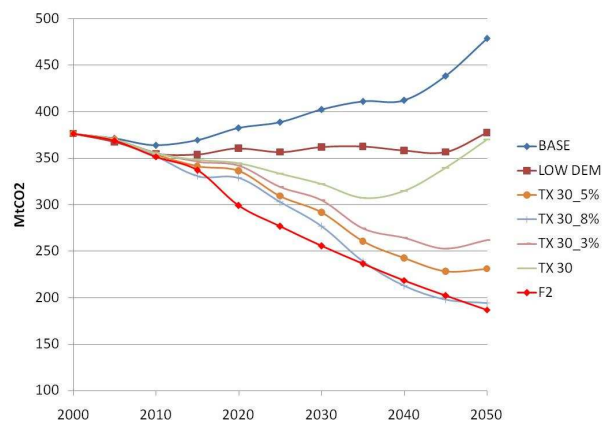
Results on CO2 emissions



Chaire Modélisation prospective
au service du développement durable

ParisTech
INSTITUT DES SCIENCES ET TECHNOLOGIES
PARIS INSTITUTE OF TECHNOLOGY

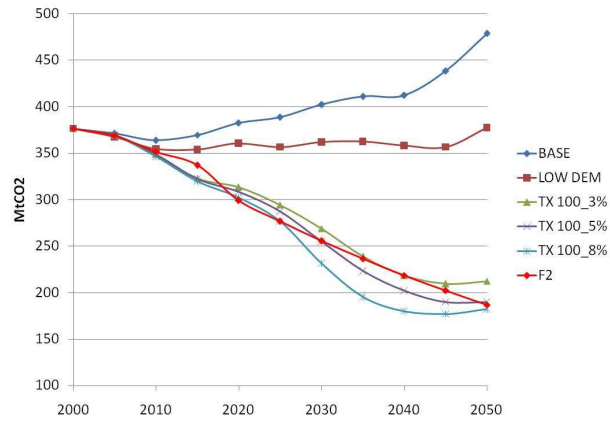
Results on CO2 emissions



Chaire Modélisation prospective
au service du développement durable

ParisTech
INSTITUT DES SCIENCES ET TECHNOLOGIES
PARIS INSTITUTE OF TECHNOLOGY

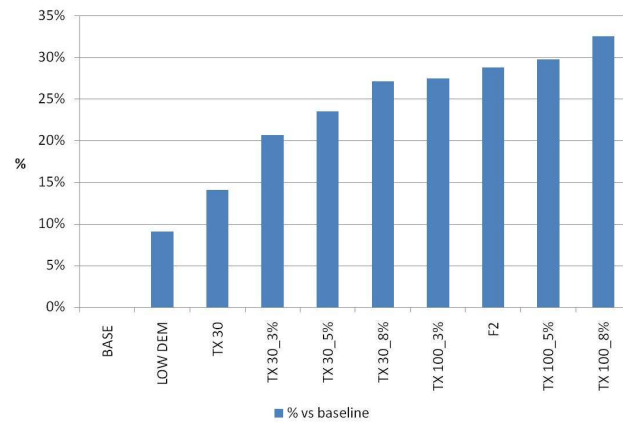
Results on CO2 emissions



Chaire Modélisation prospective
au service du développement durable

ParisTech
INSTITUT DES SCIENCES ET TECHNOLOGIES
PARIS INSTITUTE OF TECHNOLOGY

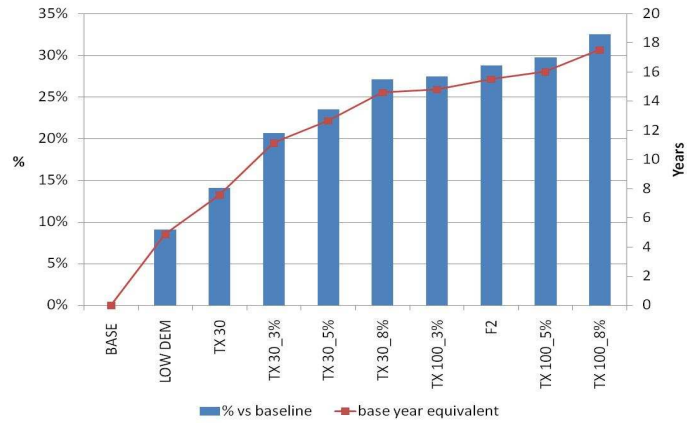
Cumulative CO2 emissions



Chaire Modélisation prospective
au service du développement durable

ParisTech
INSTITUT DES SCIENCES ET TECHNOLOGIES
PARIS INSTITUTE OF TECHNOLOGY

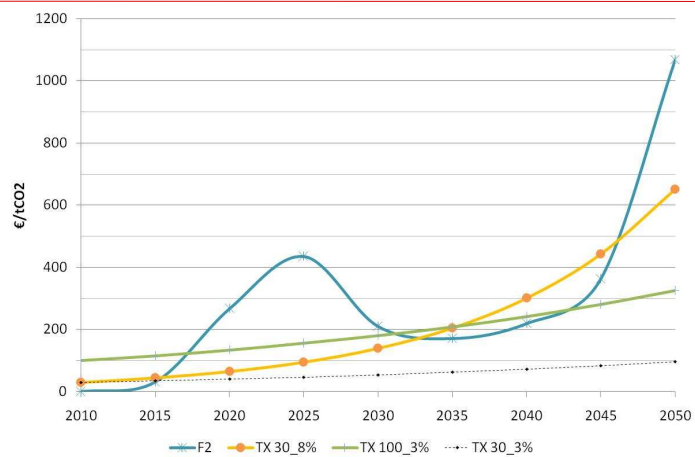
Cumulative CO2 emissions



Chaire Modélisation prospective
au service du développement durable

ParisTech
INSTITUT DES SCIENCES ET TECHNOLOGIES
PARIS INSTITUTE OF TECHNOLOGY

Carbon values



Chaire Modélisation prospective
au service du développement durable

ParisTech
INSTITUT DES SCIENCES ET TECHNOLOGIES
PARIS INSTITUTE OF TECHNOLOGY

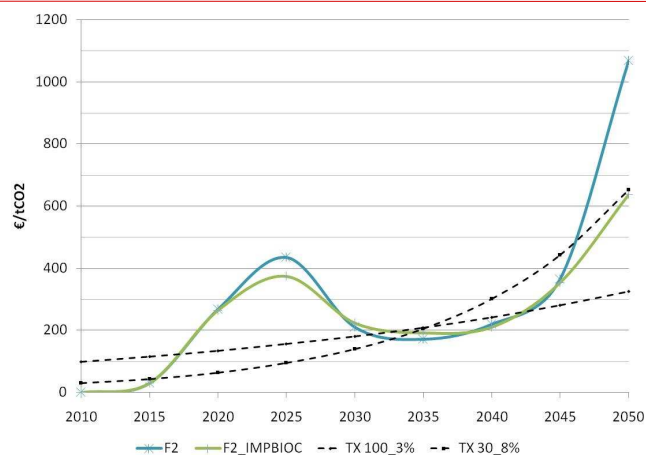
Scenarios for sensitivity analysis

- 3 types of sensitivity
 - Trade: importation of biofuel
 - Technology: nuclear development, CCS
 - Future useful energy service demand
- What we want to understand: How these factors influence the carbon value level and its time dependency?

Chaire Modélisation prospective
au service du développement durable

ParisTech
INSTITUT DES SCIENCES ET TECHNOLOGIES
PARIS INSTITUTE OF TECHNOLOGY

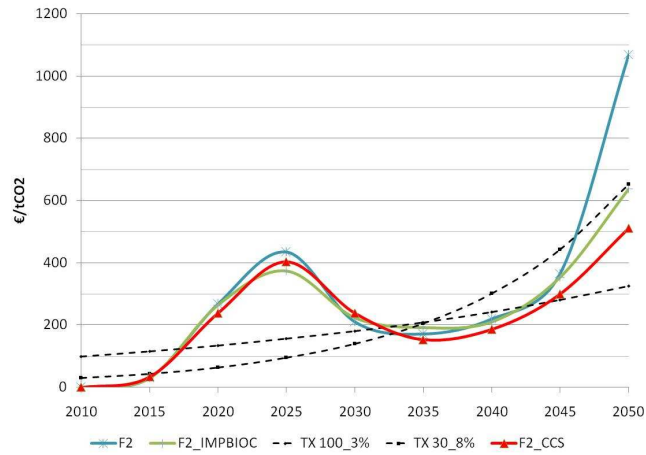
Sensitivity analysis: Trade and technology



Chaire Modélisation prospective
au service du développement durable

ParisTech
INSTITUT DES SCIENCES ET TECHNOLOGIES
PARIS INSTITUTE OF TECHNOLOGY

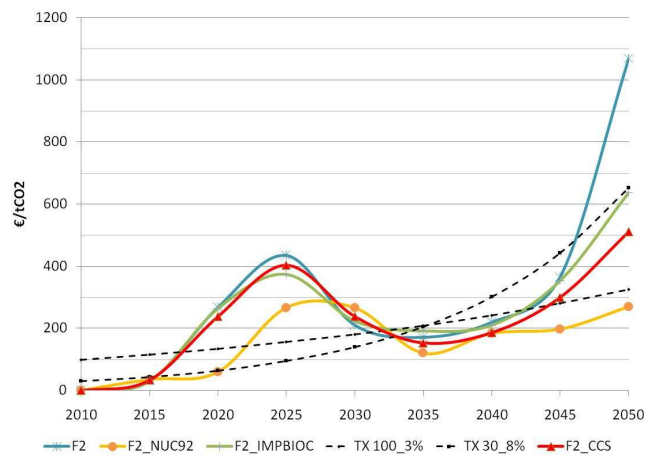
Sensitivity analysis: Trade and technology



Chaire Modélisation prospective
au service du développement durable

ParisTech
INSTITUT DES SCIENCES ET TECHNOLOGIES
PARIS INSTITUTE OF TECHNOLOGY

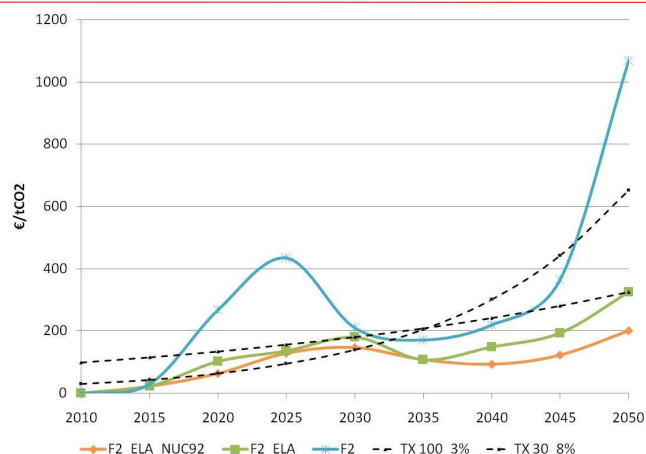
Sensitivity analysis: Trade and technology



Chaire Modélisation prospective
au service du développement durable

ParisTech
INSTITUT DES SCIENCES ET TECHNOLOGIES
PARIS INSTITUTE OF TECHNOLOGY

Sensitivity analysis: demand levels



Chaire Modélisation prospective
au service du développement durable

ParisTech
INSTITUT DES SCIENCES ET TECHNOLOGIES
PARIS INSTITUTE OF TECHNOLOGY

Concluding remarks

- Predefined tax profiles can be effective to achieve the mitigation target but they provide very few information about the tightness of the target. Proxy WTP and no unicity.
- Marginal value gives such information. It shows that carbon value does not necessarily increase and can capture the impact of intermediate targets such as the 2020 objective. The time dependency is in turn more contingent.

Chaire Modélisation prospective
au service du développement durable

ParisTech
INSTITUT DES SCIENCES ET TECHNOLOGIES
PARIS INSTITUTE OF TECHNOLOGY

Concluding remarks

- For France the sensitivity analysis quantifies some important factors affecting the level and shape of the carbon value: biofuel import, nuclear expansion and demand “sobriety”
- Interest of a country scale study through TIMES-FR: Is the value high or low? The answer in both cases is yes. Taking this value with explicit understanding of underlying conditions is indeed more **value added**.

Chaire Modélisation prospective
au service du développement durable

ParisTech
INSTITUT DES SCIENCES ET TECHNOLOGIES
PARIS INSTITUTE OF TECHNOLOGY

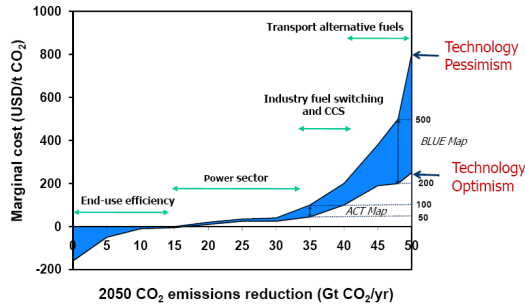
Thank you!

Chaire Modélisation prospective
au service du développement durable

ParisTech
INSTITUT DES SCIENCES ET TECHNOLOGIES
PARIS INSTITUTE OF TECHNOLOGY

Additional illustrations 1

Cost of Emissions Reductions

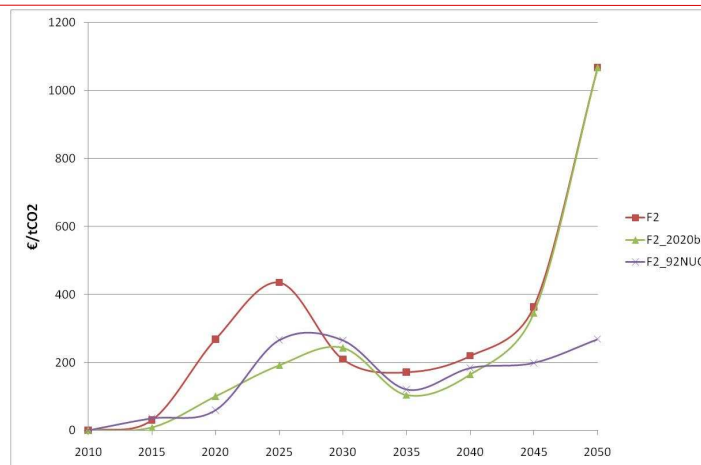


To bring emissions back to current levels by 2050 options with a cost up to USD 50/t are needed. Reducing emissions by 50% would require options with a cost up to USD 200/t, possibly even up to USD 500/t CO₂.

Chaire Modélisation prospective
au service du développement durable

ParisTech
INSTITUT DES SCIENCES ET TECHNOLOGIES
PARIS INSTITUTE OF TECHNOLOGY

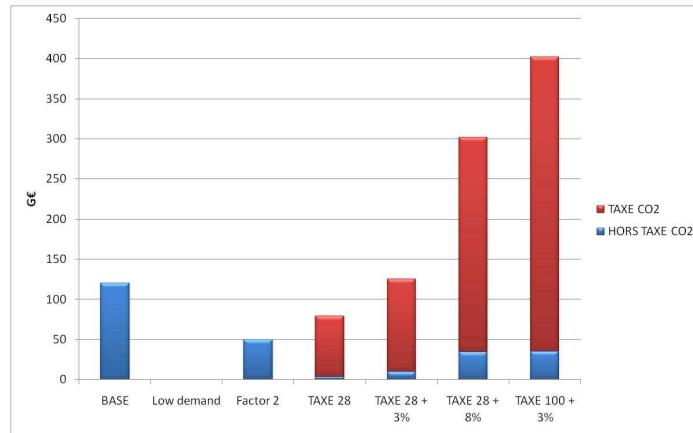
14% 2020



Chaire Modélisation prospective
au service du développement durable

ParisTech
INSTITUT DES SCIENCES ET TECHNOLOGIES
PARIS INSTITUTE OF TECHNOLOGY

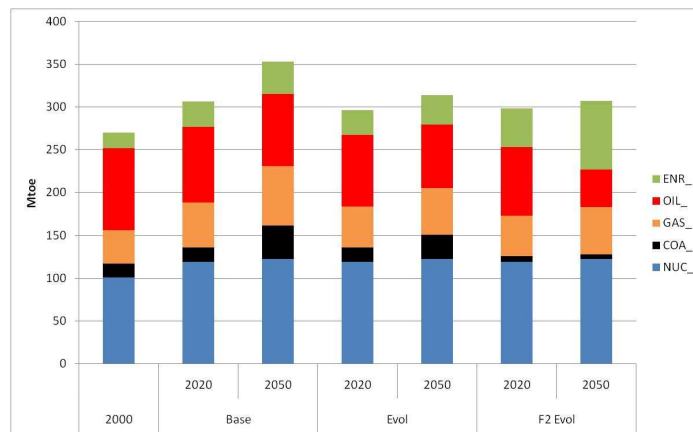
Fiscal reform!



Chaire Modélisation prospective
au service du développement durable

ParisTech
INSTITUT DES SCIENCES ET TECHNOLOGIES
PARIS INSTITUTE OF TECHNOLOGY

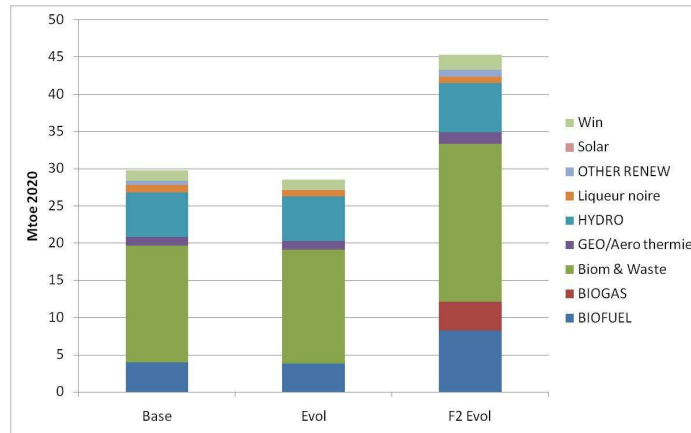
Benchmark: there are feasible energy mixes!



Chaire Modélisation prospective
au service du développement durable

ParisTech
INSTITUT DES SCIENCES ET TECHNOLOGIES
PARIS INSTITUTE OF TECHNOLOGY

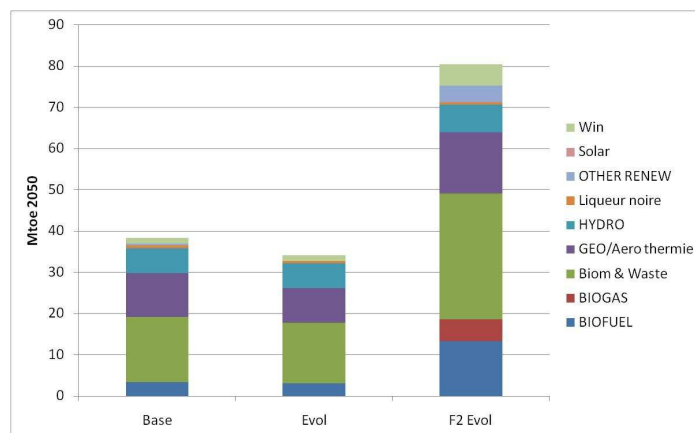
Benchmark: there are feasible energy mixes!



Chaire Modélisation prospective
au service du développement durable

ParisTech
INSTITUT DES SCIENCES ET TECHNOLOGIES
PARIS INSTITUTE OF TECHNOLOGY

Benchmark: there are feasible energy mixes!

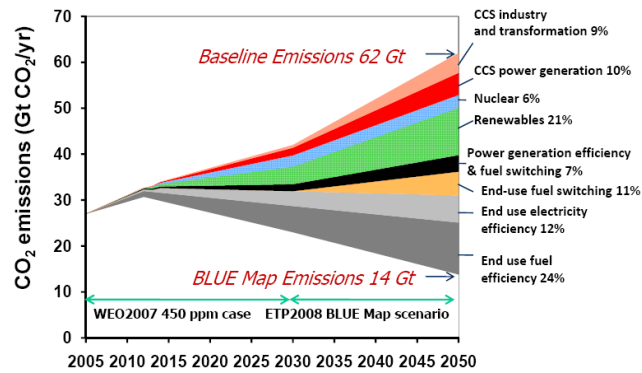


Chaire Modélisation prospective
au service du développement durable

ParisTech
INSTITUT DES SCIENCES ET TECHNOLOGIES
PARIS INSTITUTE OF TECHNOLOGY

Additional illustrations 1

A New Energy Revolution: Cutting Energy Related CO₂ Emissions



Chaire Modélisation prospective
au service du développement durable

ParisTech

INSTITUT DES SCIENCES ET TECHNOLOGIES
PARIS INSTITUTE OF TECHNOLOGY