



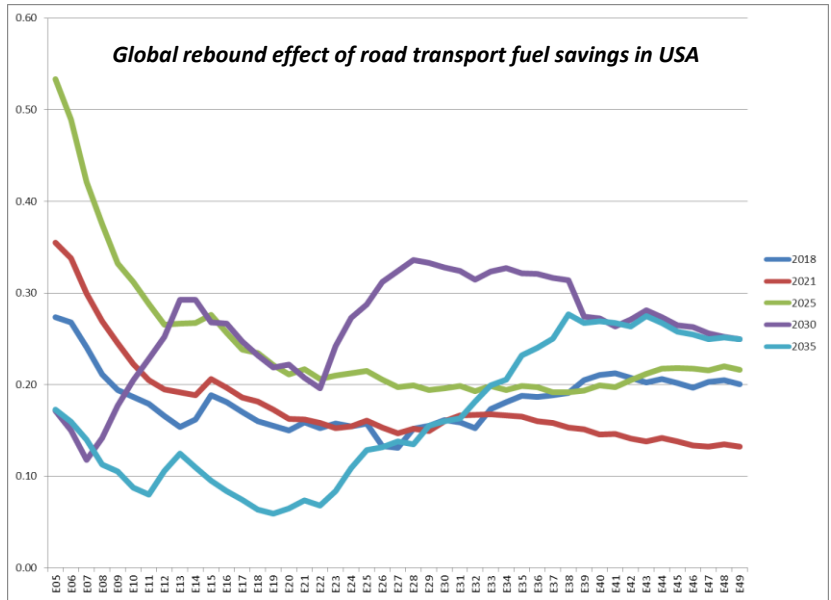
ETSAP meeting  
Cape Town  
June 22, 2012

## Collaborations and Linkages

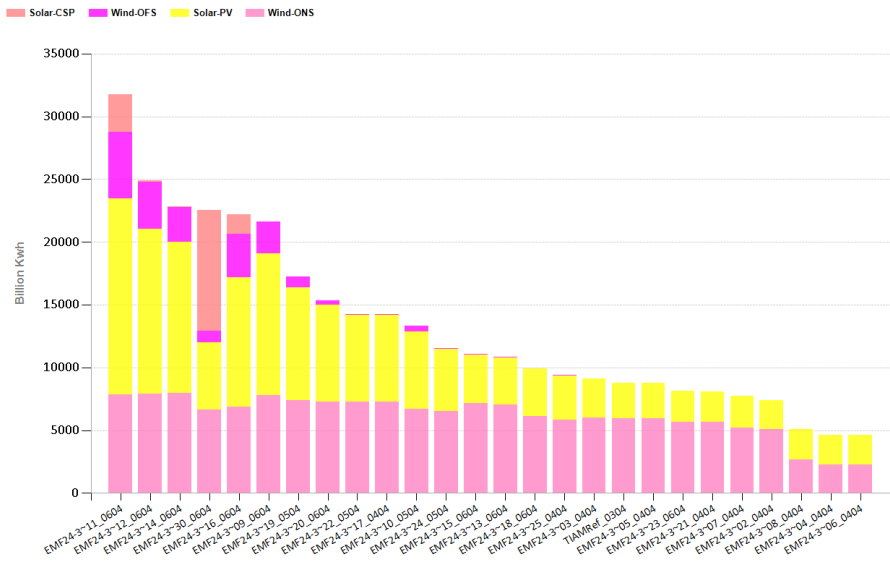


- Regional
  - IGES Japan (INDIA)
    - Serving and retired Indian government officials
  - Indian Institute of Management Bangalore
  - IAE Japan (JAPAN)
  - EMF26 (**Link with FACETS**) (USA)
- Sector
  - IFP Paris
    - Biorefineries
    - Oil refineries (near future)
- Major updates
  - Electricity techs (Etech-DS)
  - Renewable potentials (NREL)

Collaborations and Linkages WORLD TIAM



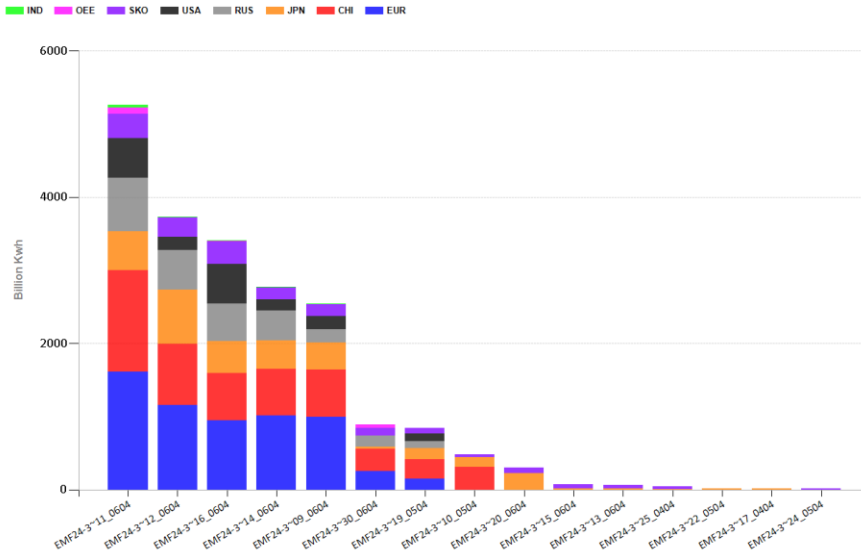
Wind and Solar Electricity under EMF27 scenarios WORLD TIAM



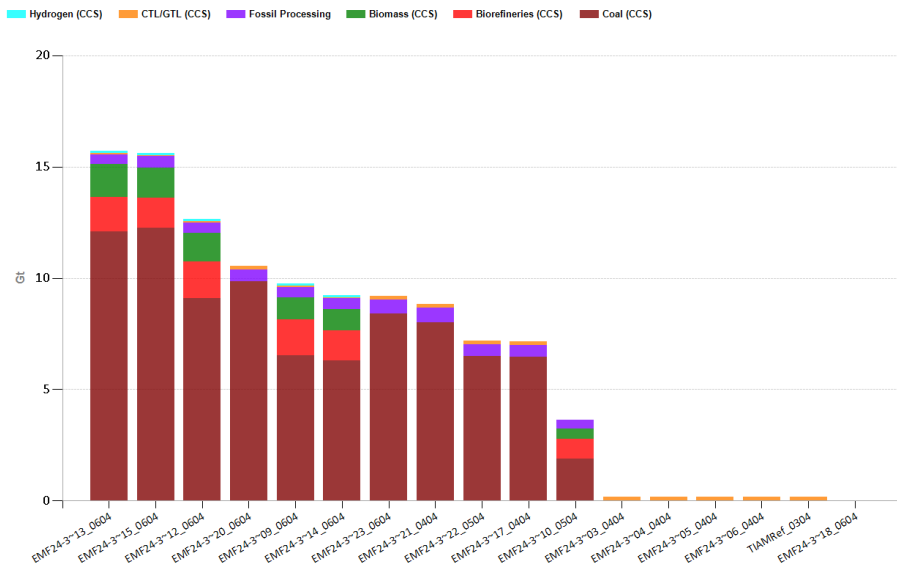
# Off-shore Wind Electricity under EMF27 scenarios



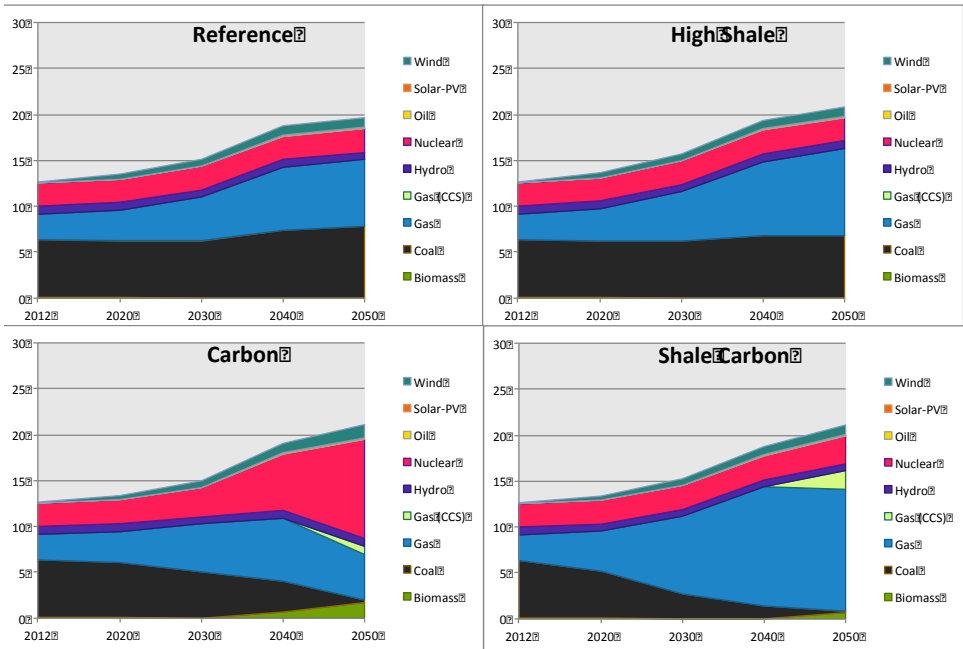
Electricity production - Win-OFF



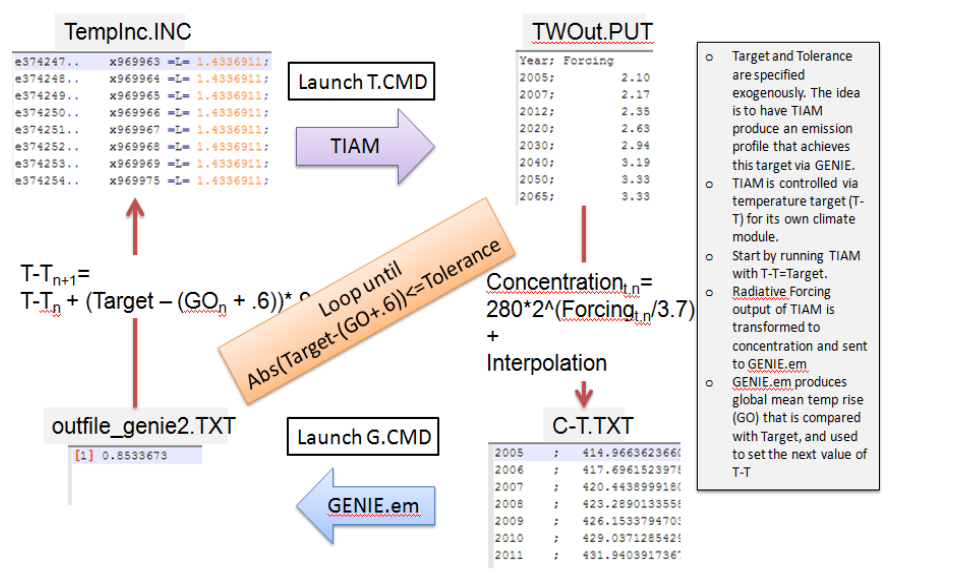
# Sequestration (Geo) under EMF27 scenarios



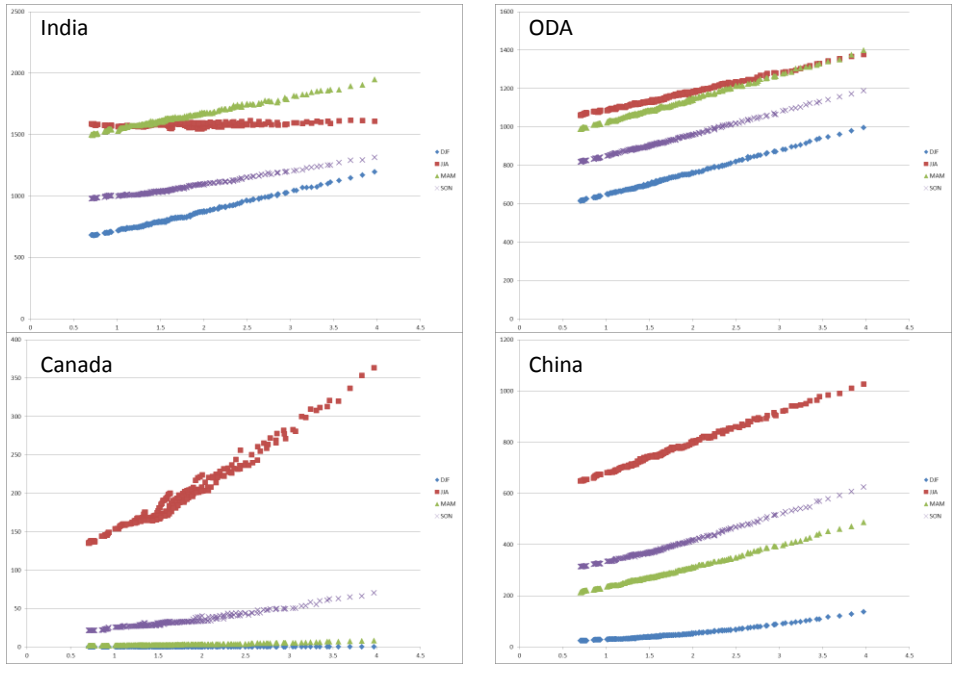
EMF26: Electricity generation in USA (Quads) **FACETS**



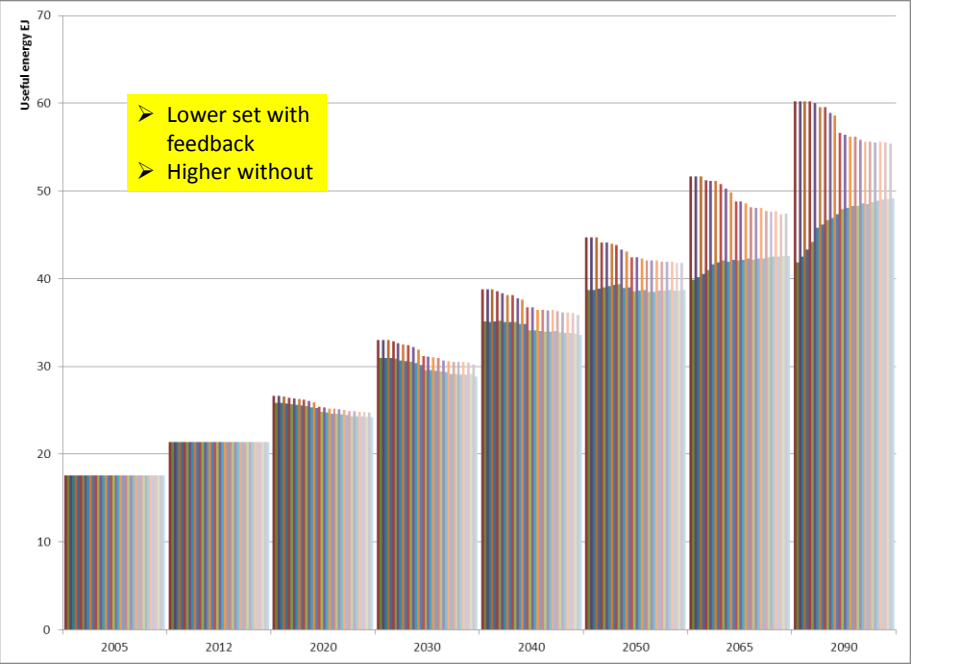
TIAM-World and GENIE.m



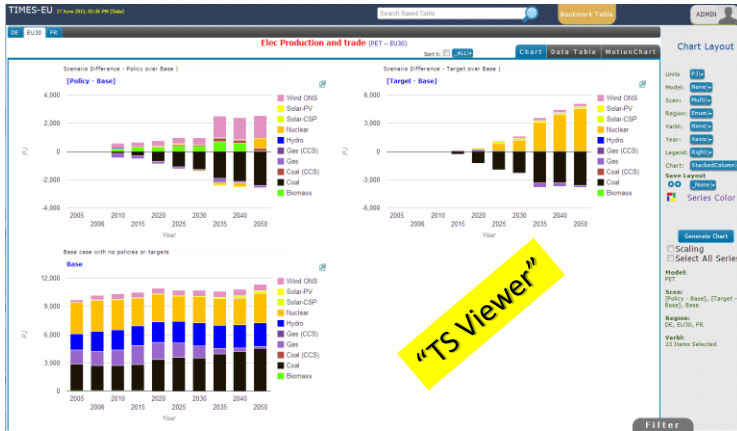
## Cooling deg days under different warming scenarios



## Climate feedback on Residential Heating demand

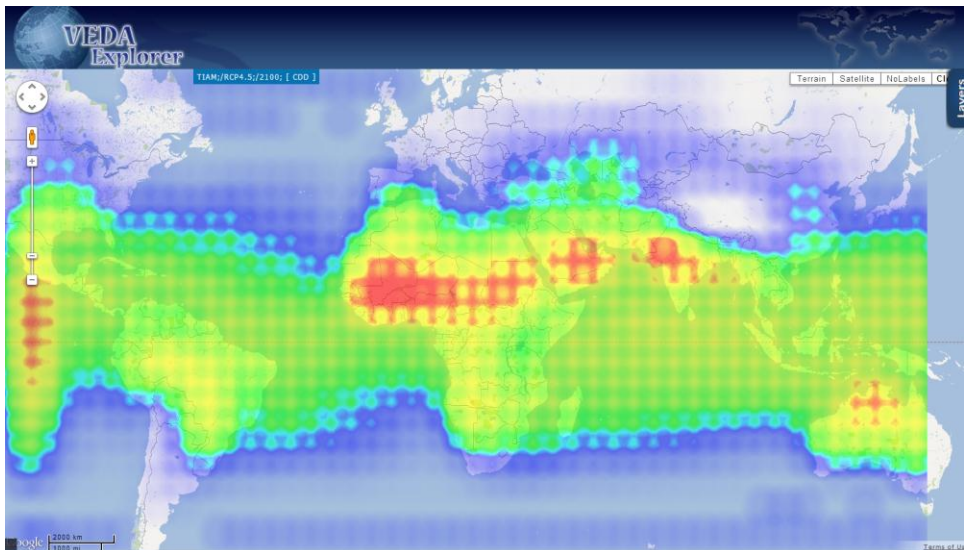


## Collaboration platform

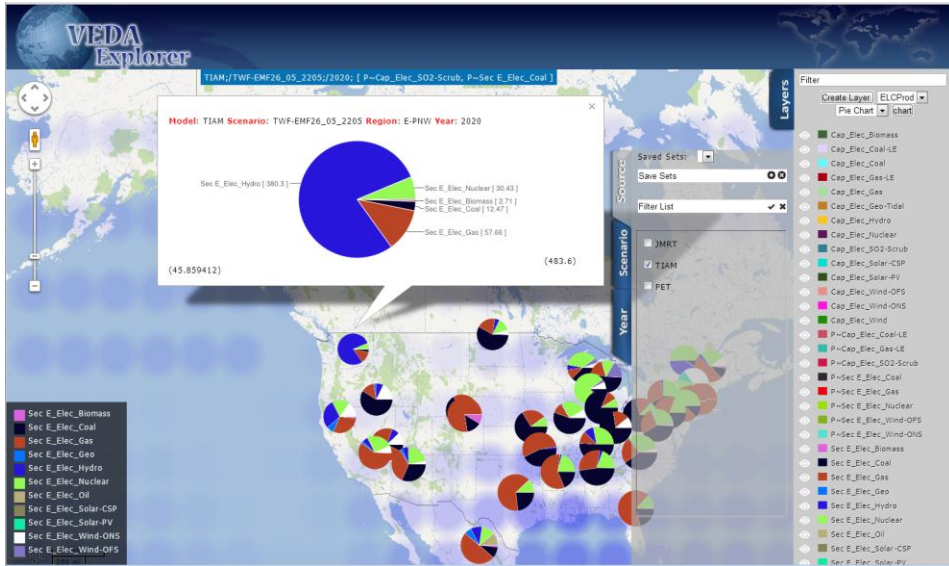


[www.kanors.com/vedaexplorer](http://www.kanors.com/vedaexplorer)

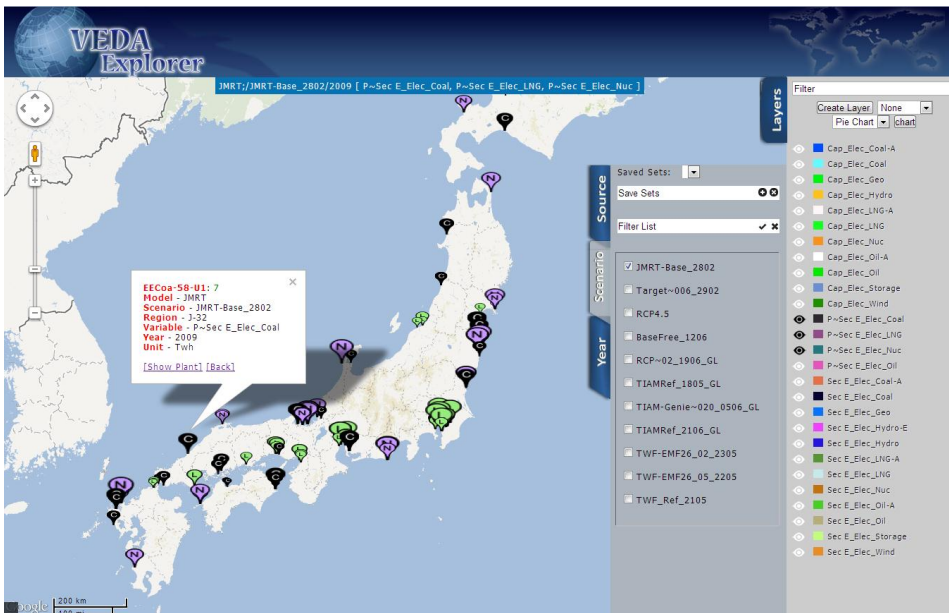
## Cooling Degree Day map for 2100 under RCP 4.5



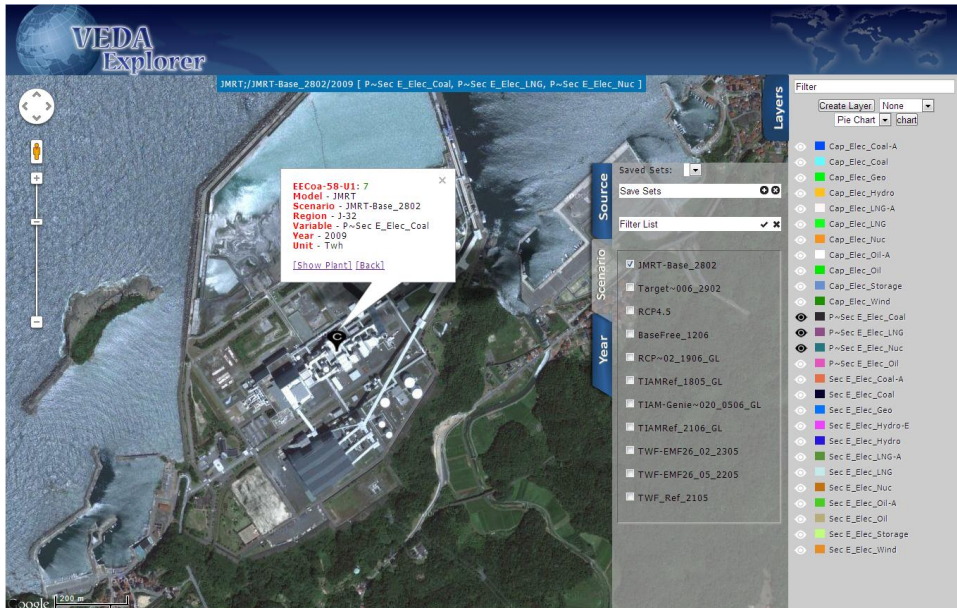
## Production mix in various US grids



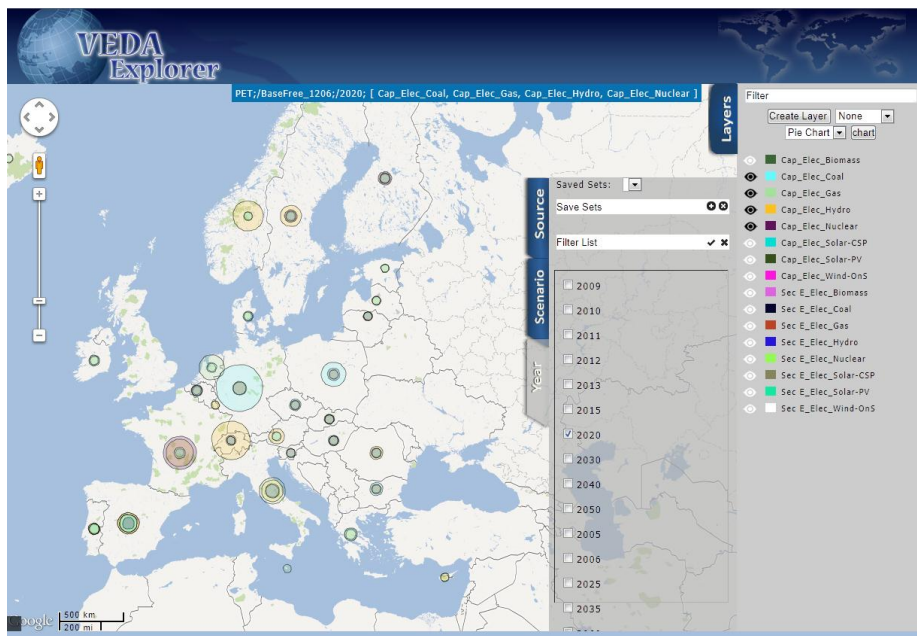
## Electricity production by Japanese power plants



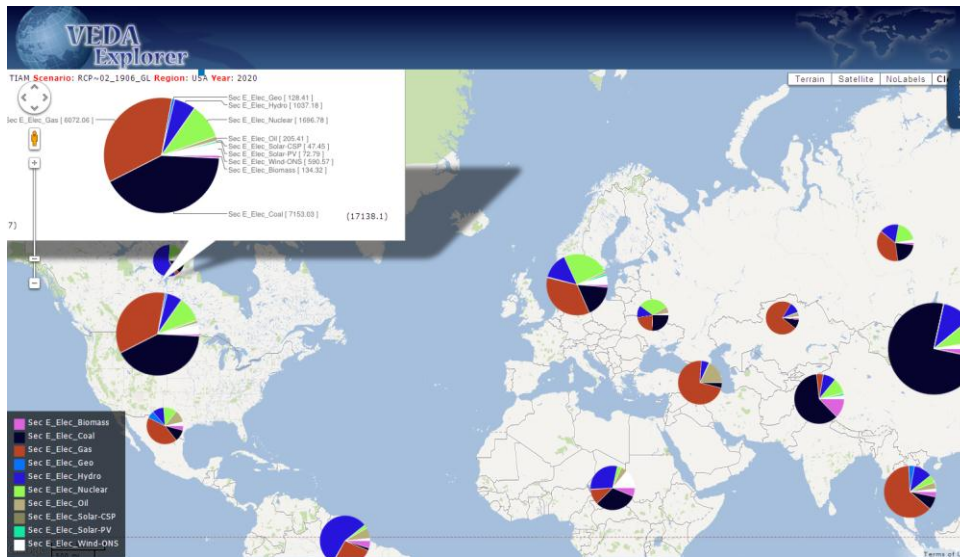
## Electricity production by Japanese power plants



## Electricity production capacity in EU (PET model)



## Global ELC Production mix in 2020 under RCP4.5



## Next steps...

- Continue intensive use and sector/region collaborations
- Make TIAM-World and PET *learn* from the more detailed models

